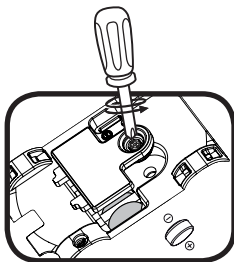


Toot-Toot Cory Carson[®] SmartPoint[™] Vehicle

Parent's Guide

BATTERY REMOVAL AND INSTALLATION

1. Make sure the unit is turned **OFF**.
2. Locate the battery cover on the bottom of the unit. Use a screwdriver to loosen the screw.
3. If used batteries are present, remove these batteries from the unit.
4. Install 3 new LR44 button cell batteries following the diagram inside the battery box. (The use of new alkaline batteries is recommended for maximum performance.)
5. Replace the battery cover and tighten the screw to secure.



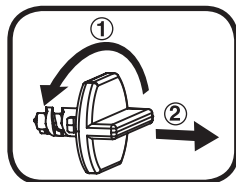
WARNING: All packing materials such as tape, plastic sheets, packaging locks, removable tags, cable ties, cords and packaging screws are not part of this toy and should be discarded for your child's safety.

NOTE: Please keep this parent's guide as it contains important information.

WARNING: Adult assembly required for battery installation. Keep batteries out of reach of children.

Removing the packaging locks

- ① Rotate the packaging lock anticlockwise several times.
- ② Pull out the packaging lock and discard.



IMPORTANT: BATTERY INFORMATION

- Insert batteries with the correct polarity (+ and -).
- Do not mix old and new batteries.
- Do not mix alkaline, standard (carbon-zinc) or rechargeable batteries.
- Only batteries of the same or equivalent type as recommended are to be used.
- Do not short-circuit the supply terminals.

- Remove batteries during long periods of non-use.
- Remove exhausted batteries from the toy.
- Dispose of batteries safely. Do not dispose of batteries in fire.

RECHARGEABLE BATTERIES:

- Remove rechargeable batteries from the toy before charging.
- Rechargeable batteries are only to be charged under adult supervision.
- Do not charge non-rechargeable batteries.

WARNING

This product contains one or more button cell or coin batteries. If swallowed, a button cell or coin battery can cause internal chemical burns in as little as two hours and can lead to death. Dispose of used batteries immediately. Keep new and used batteries away from children. If you think batteries might have been swallowed or placed inside any part of the body, seek immediate medical attention, and go straight to the nearest hospital emergency department.

Australia / New Zealand:

If you think batteries might have been swallowed or placed inside any part of the body, immediately call the 24-hour Poisons Information Centre on 13 11 26 (in Australia) or 24-hour National Poisons Centre on 0800 764 766 (in New Zealand) for fast, expert advice and go straight to the nearest hospital emergency room.

Disposal of batteries and product



The crossed-out wheelie bin symbols on products and batteries, or on their respective packaging, indicates they must not be disposed of in domestic waste as they contain substances that can be damaging to the environment and human health.



The chemical symbols Hg, Cd or Pb, where marked, indicate that the battery contains more than the specified value of mercury (Hg), cadmium (Cd) or lead (Pb) set out in Battery Directive (2006/66/EC). The solid bar indicates that the product was placed on the market after 13th August, 2005.

Help protect the environment by disposing of your product or batteries responsibly.

VTech[®] cares for the planet.

Care for the environment and give your toy a second life by disposing of it at a small electricals collection point so all its materials can be recycled.

In the UK:



Visit www.recyclenow.com to see a list of collection points near you.

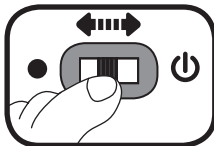
In Australia & New Zealand:

Check with your local council for kerbside collections.

PRODUCT FEATURES

1. On/Off Switch

To turn the unit **On**, slide the **On/Off Switch** to the **On**  position. To turn the unit **Off**, slide the **On/Off Switch** to the **Off**  position.



2. Automatic Shut-Off

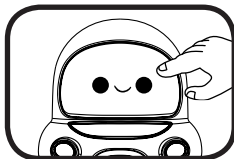
To preserve battery life, the **Toot-Toot Cory Carson**® character will automatically power down after approximately 30 seconds without input. The unit can be turned on again by pressing the **Light Up Button**, **Action Button** or by pushing the character quickly.

NOTE: This product is in try-me mode in the packaging. After opening the package, turn the vehicle off and on again to proceed with normal play. If the unit powers down while playing, we suggest changing the batteries.

ACTIVITIES

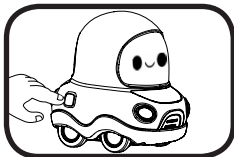
1. Light Up Button

Press the **Light Up Button** to hear sounds, phrases and melodies. The light will flash with the sounds.



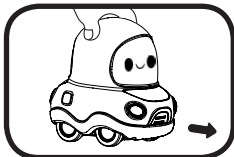
2. Action Button

Press the **Action Button** to activate lights or a mechanical function on the character and hear fun sounds. The light will flash with the sounds.



3. Sounds and Melodies

Push the character to hear fun sounds. If a melody is already playing, push the character to add fun sounds on top of the melody. The light will flash with the sounds.



3

4. SmartPoint™ Locations

For added fun, the character interacts with the **SmartPoint™** location on **Toot-Toot Cory Carson**® play sets. Simply place the character on the **SmartPoint™** location to see the light flash and to hear fun sounds, phrases and short tunes. (Play sets sold separately).



CARE & MAINTENANCE

1. Keep the unit clean by wiping it with a slightly damp cloth.
2. Keep the unit out of direct sunlight and away from any direct heat source.
3. Remove the batteries when the unit is not in use for an extended period of time.
4. Do not drop the unit on hard surfaces and do not expose the unit to moisture or water.

TROUBLESHOOTING

If for some reason the unit stops working or malfunctions, please follow these steps:

1. Turn the unit **OFF**.
2. Interrupt the power supply by removing the batteries.
3. Let the unit stand for a few minutes, then replace the batteries.
4. Turn the unit **ON**. The unit should now be ready to play with again.
5. If the product still does not work, install a new set of batteries.

If the problem persists, please contact our Consumer Services Department and a service representative will be happy to help you.

4

CONSUMER SERVICES

Creating and developing **VTech®** products is accompanied by a responsibility that we at **VTech®** take very seriously. We make every effort to ensure the accuracy of the information, which forms the value of our products. However, errors sometimes can occur. It is important for you to know that we stand behind our products and encourage you to call our Consumer Services Department with any problems and/or suggestions that you might have. A service representative will be happy to help you.

UK Customers:

Phone: 0330 678 0149 (from UK) or +44 330 678 0149 (outside UK)

Website: www.vtech.co.uk/support

Australian Customers:

Phone: 1800 862 155

Website: support.vtech.com.au

NZ Customers:

Phone: 0800 400 785

Website: support.vtech.com.au

Product Warranty /Consumer Guarantees

UK Customers:

Read our complete warranty policy online at vtech.co.uk/warranty.

Australian Customers:

VTECH ELECTRONICS (AUSTRALIA) PTY LIMITED – CONSUMER
GUARANTEES

Under the Australian Consumer Law, a number of consumer guarantees apply to goods and services supplied by VTech Electronics (Australia) Pty Limited. Please refer to vtech.com.au/consumerguarantees for further information.

**Visit our website for more
information about our products,
downloads, resources and more.**

www.vtech.co.uk
www.vtech.com.au

